



Marina Port Zélande

Open Dutch Championship Finn Master 2019

Tune-up for the Finn World Masters 2020

July 5 - 7, 2019

NOTICE OF RACE

Organizing Authority:

On behalf of Marina Port Zélande and under the auspices of the Royal Netherlands Yachting Union (RNYU) and Finn Club Holland, race-management by SailService.org competitors are invited to participate.

Class: Finn Class.

Location: Grevelingen Meer, Port Zélande.

Information: www.finn-sailing.nl and www.mpz.nl

1 RULES

- 1.1 The regatta will be governed by the rules as defined in *The Racing Rules of Sailing* (RRS)
- 1.2 The prescriptions of the Royal Netherlands Yachting Union (RNYU) will apply. (see <http://www.sailing.org/33568.php>)
- 1.3 The 'Rules for Championships Sailing and Windsurfing' will apply.
- 1.4 [DP] Competitors shall wear personal flotation devices at all times while afloat, except briefly while changing or adjusting clothing or personal equipment. This changes RRS 40.
- 1.5 If there is a conflict between languages the English text will take precedence.

2 ADVERTISING

Boats may be required to display advertising chosen and supplied by the Organizing Authority.

3 ELIGIBILITY AND ENTRY

- 3.1 The regatta is open to all boats in de Finn class.
- 3.2 Entries will be accepted in the following categories, with age determined as the age at the birthday in the year of the event:
 - (a) World Master (the overall winner)
 - (b) Master born in and before 1979
 - (c) Grand Master born in and before 1969
 - (d) Grand Grand Master born in and before 1959
 - (e) Legends born in and before 1949
- 3.3 The following restrictions on the number of boats apply: maximum 100.
- 3.4 Competitors must be current members of an IFA recognized National Finn Association.
- 3.5 Boats may enter by completing the Entry Form on the website of the Finn Club Holland: www.finn-sailing.nl/wedstrijden-inschrijven under "serie" there is a scroll down menu where you can choose ONK Masters.
- 3.6 **Entry closes on July 4th at 24:00 hrs.** If the amount of competitors exceeds the maximum of 100 competitors, you will be placed on a reserve list.
- 3.7 Competitors have to possess a valid Registration Certificate and a valid third-party Liability Insurance. It may be requested to show it at Registration (Race) office.

4 FEES

- 4.1 The required fee is Euro € **95,00** to be *paid by credit card or debit card during administration.*

5 SCHEDULE

5.1 Registration: All competitors are required to register their boat on July 4th 2019 between 19:00 and 21:00 hrs and July 5th 2019 between 09:00 and 10:00 hrs. at the Race Office.

5.2 Dates, numbers of races and time of warning signal:

Date	Scheduled number of races	Time of first warning signal
Friday July 5 th 2019	2	11:25 hrs.
Saturday July 6 th 2019	3	10:25 hrs.
Sunday July 7 th 2019	3	10:25 hrs.

One extra race per day may be sailed.

5.3 On the last scheduled day of racing no warning signal will be made after 15:00 hrs.

6 QUALIFYING AND FINAL SERIES

6.1 No qualifying series will be held.

7 MEASUREMENTS

7.1 Each boat is obliged to hold a valid Measurement Certificate.

8 SAILING INSTRUCTIONS

8.1 The Sailing Instructions will be available after 19:00 hrs. on July 4th 2019 at the Race Office or will be posted online on the Finn Club Website.

9 VENUE

9.1 Attachment A shows the location of the regatta harbor.

9.2 Attachment B shows the location of the racing areas.

10 COURSES

10.1 The courses to be sailed will be as follows: Olympic Triangle or Upwind Downwind (Gate).

11 SCORING

11.1 Four races are required to be completed to constitute a Championship.

11.2 (a) When fewer than five races have been completed, a boat's series score will be the total of her race scores.

(b) If five races or more have been completed, a boat's score will be the total of all her races scores excluding her worst score.

11.3 Beside the overall scoring, there will be an Open Dutch Championship Finn Master 2019 scoring for participants born in 1979 and before (Masters), born in 1969 and before (GM), born in 1959 and before (GGM) and born in 1949 and before (Legends) - in accordance with the International Finn Association Master Rules.

12 RACE MANAGEMENT POLICYS

- 12.1 The latest version of the World Sailing Race Policys will apply.
- 12.2 When racing conditions are 20+ knots average windspeed, the Race Officer could decide to abandon the race, due safety reasons, in line with the guidance of the Finn Club Holland policys. This decision will be no reasons for a hearing.

13 SUPPORT BOATS

13.1 Team leaders, coaches and other support personnel shall stay outside areas within 100 meters meters where boats are racing from the time of the preparatory signal for the first start, until all boats have finished or retired or the Race Committee signals a postponement, general recall or abandonment.

14 BERTHING

14.1 Boats shall be kept in their assigned places in the boat park.

15 HAUL-OUT RESTRICTIONS

15.1 Not applicable.

16 DIVING EQUIPMENT AND PLASTIC POOLS

16.1 Not applicable.

17 RADIO COMMUNICATION

17.1 A boat shall neither make radio transmissions while racing nor receive radio communications not available to all boats. This restriction also applies to mobile telephones. VHF will only be used for safety communication.

18 PRIZES

18.1 The winning boat of the Open Dutch Championship Finn Masters 2019 (born in 1979 or before) acquires the title "Dutch Champion 2019", the prize and the Blue Pennant of the RNYU. A total of 6 other prizes will be given during the Open Dutch Championship Finn Master 2019.

19 DISCLAIMER OF LIABILITY

19.1 Competitors participate in the regatta entirely at their own risk. See RRS, Rule 4, *Decision to Race*. The Organizing Authority will not accept any liability for material damage or personal injury or death sustained in conjunction with or prior to, during, or after the regatta.

20 RIGHTS TO USE NAME AND LIKENESS

By participating in this event, competitors automatically grant to the organizing authority and the event sponsors the right, in perpetuity, to make, use, and show, at their discretion, any photography, audio and video recordings, and other reproductions of them made at the venue or on the water from the time of their arrival at the venue, until their final departure, without compensation

21 INSURANCE

Each participating boat shall be insured with valid third-party liability insurance with a minimum cover of Euro € 1.500,000 per event or the equivalent.

22 Risk Statement

22.1 Rule 4 of the Racing Rules of Sailing States: "The responsibility for a boat's decision to participate in a race or continue to race is hers alone".

Sailing is by nature an unpredictable sport and therefore inherently involves an element of risk. By taking part in the event, each competitor agrees and acknowledges that:

- (a) They are aware of the inherent element of the risk involved in the sport and accept responsibility for the exposure of themselves, their crew and their boat to such inherent risk whilst taking part in the event;
- (b) They are responsible for the safety of themselves, their crew, their boat and their other property whether afloat or ashore;
- (c) They accept responsibility for any injury, damage or loss to the extent caused by their own actions or omissions;
- (d) Their boat is in good order, equipped to sail in the event and they are fit to participate;
- (e) The provisions of a race management team, patrol boats and other officials and volunteers by the race organiser does not relieve them of their own responsibilities;
- (f) The provisions of the patrol boats cover is limited to such assistance, particularly in extreme weather conditions, as can be practically provided in the circumstances;
- (g) It is their responsibility to familiarize themselves with any risks specific to this venue or this event drawn to their attention in any rules and information produced for the venue or event and to attend
- (g) The fact that the Race Committee conducts inspection, or not, of a boat does not reduce the responsibilities of each competitor set out in this Notice of Race and Sailing Instructions.

23 CARAVANS. CAMPERS, TENTS

Facilities for camping are available at the site of the event at Marina Port Zélande (website: www.mpz.nl, mail: haven@mpz.nl).

Please register upon arrival at the reception desk at the marina.

24 FURTHER INFORMATION

For further information please contact:

Secretary of the Finn World Masters 2020 Port Zélande: Hans Zuurendonk

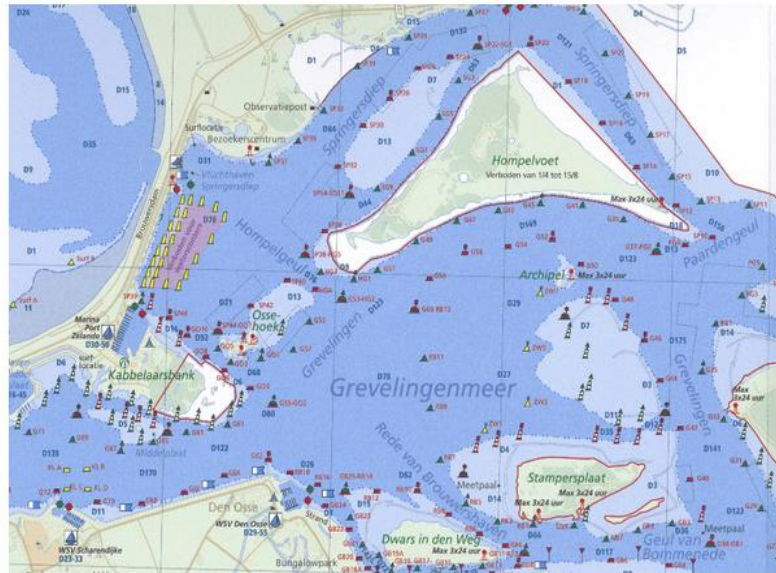
T: +31 6 317 59 56 26 or e-mail: hjzuurendonk@btinternet.com

www.finn-sailing.nl

www.mpz.nl

Attachment A: Location of the harbor

Marina Port Zélande
Kabellaarsbank 5
3252 ME Ouddorp - Netherlands
www.mpz.nl



Attachment B: Location of the racing area

